



KITSAP COUNTY SHERIFF'S OFFICE

614 Division Street MS-37
Port Orchard, WA 98366
360.337.5698
www.kitsapgov.com/sheriff

Sheriff
Gary Simpson
News

For immediate release:
Release #19-013 / 125 / 120

Friday, March 29, 2019

Motorcycle mishap

One person killed in Central Kitsap crash

Central Kitsap, Wash. -- Kitsap County Sheriff's traffic deputies are investigating a crash that occurred Thursday evening that claimed the life of a motorcyclist.

Location: 3000 block of Seabeck Highway NW, near NW Old Sawmill Place NW in Central Kitsap.

Time & date: reported at 9:16 p.m., Thursday, March 28, 2019.

Responding agencies:

Patrol and traffic investigators from the Kitsap County Sheriff's Office.

Engine and medic units from Central Kitsap Fire & Rescue (CKFR).

Deputy Coroners from the Kitsap County Coroner's Office.

Involved:

Vehicle: 2018 Honda CMX500J motorcycle.

Operator: identified by the coroner's office as Taylor Michael Santa Cruz, 21, from Central Kitsap.

No other persons or vehicles were involved.

Synopsis:

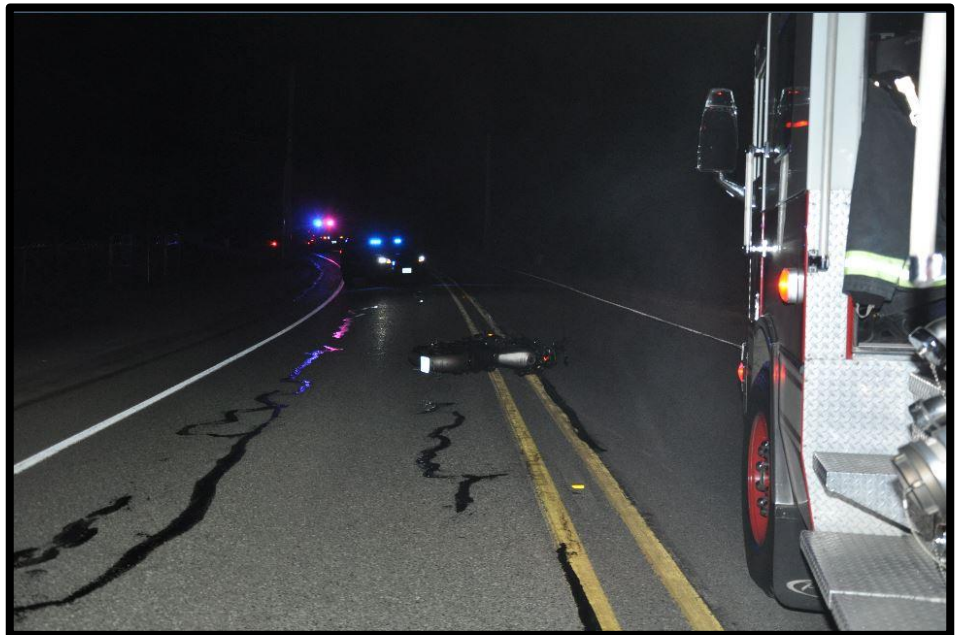
Although the investigation is in its preliminary stages, traffic investigators report that, based on witness statements and evidence at the collision scene, the motorcycle was heading northbound on Seabeck Highway NW at high speeds and passed several vehicles on Kitsap Way and on Northlake Way.

Witnesses report ‘near collisions’ between the motorcycle and other vehicles as the motorcyclist passed traffic. Witnesses then came upon the collision shortly afterwards.

Investigators state that the Honda CMX500J was traveling at a high rate of speed when the operator was unable to negotiate a curve to the right. The motorcycle and rider collided with a guardrail along the northbound shoulder.

Although he was wearing a helmet, the motorcyclist sustained a significant head injury. The consumption of alcoholic intoxicants by the motorcyclist is a possible factor in the cause of the collision.

Responding sheriff’s deputies and CKFR initiated immediate emergency life saving efforts. The motorcyclist was pronounced deceased at the scene by medics.



The motorcycle was impounded. An autopsy will be performed Monday by the county’s forensic pathologist. The Kitsap County Coroner will determine the cause and manner of death, pending forensic toxicology testing.

The roadway was closed for approximately two hours and reopened shortly after 11 p.m.

###